



iData T1 Pro

Next-Generation Professional Smart Terminal

Enhanced in Multiple Aspects, a More Powerful Mobile Working Assistant

The iData T1 Pro has seen upgrades in various configurations and form factors compared to its predecessor. With a more powerful core and additional enhancements, the device can support more business operations. The latest iData scanning engine, available in both right-angle and tilt-angle options, allows the device to adapt to more diverse work scenarios. The newly upgraded detachable battery design, backup power support, and various charging accessories significantly enhance the efficiency of device clusters.

Multiple Enhancements for Comprehensive Business Support

The newly upgraded CPU boasts an AnTuTu benchmark score exceeding 200,000*, paired with the latest Android 14.0, providing frontline workers with a user experience comparable to mainstream smartphones. Increased memory and flash storage support allow workers to pre-install and run more applications, effortlessly supporting more business operations.

Enhanced Scanning Performance for Versatile Operations

Featuring iData's latest scanning engine, the device can quickly capture almost any 1D/2D barcode. The support for mid-range and long-range scanning engines expands operational scenarios. With both right-angle and tilt-angle scanning options, the 27° optimal scanning angle enables easy scanning and information confirmation without lifting the device.

Improved Battery Life for More Efficient Cluster Operations

The newly upgraded 5000mAh removable battery design with backup power support greatly enhances the device's battery life. When the device is low on power, there is no need to shut it down; simply replace the battery, and it is ready to use immediately. With various charging accessories, the device can achieve higher efficiency in scenarios requiring large-scale cluster operations, such as warehouses and sorting centers.



Store Management



Inventory Management



E-commerce Shipping



Production Management

*Due to limitations of the test environment and the version of AnTuTu, actual benchmark scores may vary.

T1 Pro Technical Specifications

System Configuration

Processor	Octa-core 2.0GHz high-performance processor
Operating System	Android 14.0 (GMS)
Memory (ROM +RAM)	64GB + 4GB (standard)
SIM	Select two out of three available SIM card slots, support dual SIM and dual standby * two cards can be inserted at the same time, Nano SIM card + Nano SIM card /Nano SIM card +TF card
Expansion Slot	Micro SD card (up to 512GB)
Display Screen	5.5-inch, resolution: 1440*720 pixels, IPS
Touch Screen	Industrial capacitive screen, support wet-hand operation/glove mode/multi-touch
Camera	13MP rear camera, support auto-focus/PDAF, 5MP front camera
Flashlight	1A flashlight
Keypad	6 keys in total: side scan key *2, side power key *1, volume key*2, custom key*1
Battery	3.85V lithium battery, with 5000mAh, detachable, support backup battery Execution Standard: GB31241-2022
Audio	Built-in dual microphone (noise-canceling microphone)
Charging Method	Type-C charging and pin port charging, support 18W fast charging
Reminder	Vibration reminder/LED reminder/Audio reminder
Vibrating Motor	Built-in vibrating motor
Sensors	G-sensor/ Proximity sensor/Light sensor, Optional: Gyroscope/geomagnetic sensor/high-precision barometer
Intercom Function (Optional)	Support one-button PTT calls

Structure Parameter

Dimension (L*W*D)	160.7mm*74.9mm*15.4mm
Weight	278g (including the battery)

Environmental Parameter

Working Temperature	-20°C - 60°C <small>*Do not charge under low temperature conditions for the safety concerns</small>
Storage Temperature	-40°C - 60°C (without the battery)
Humidity	0 - 95% (no moisture condensation)
Drop Specification	Multiple drops to concrete floor from the height of 1.5m
Roller Drop Specification	1000 times of roller drops from a height of 0.5 meter
Ingress Protection	IP67/IP65
ESD Protection	±15KV (air discharge), ±8KV (contact discharge)

Communication Interface

USB Interface	Type-C (with headset function) *1
OTG Interface	Support

Scanning Engine

Barcode Type	It can scan one-dimensional / two-dimensional barcodes
Scanning Accuracy	≥3.33mil
Scanning Angle	Pitch: ±60°; Skew: ±45°; Tilt: 360°
View Angle	Horizontal: 44.3°, Vertical: 28.4°, Diagonal: 51°
Motion Error Tolerance	8m/s

Communication Transmission

WWAN (Network Frequency)	China & Eurasian version 2G: B2/B3/B5/B8 3G: WCDMA: B1/B2/B5/B8 TD-SCDMA: B34/B39 4G: FDD-LTE: B1/B3/B5/B7/B8/B20 TDD-LTE: B34/B38/B39/B40/B41 Global version 2G: B2/B3/B5/B8 3G: WCDMA: B1/B2/B4/B5/B8 TD-SCDMA: B34/B39 4G: FDD-LTE: B1/B2/B3/B4/B5/B7/B8/B12/B17/B20/B28A/B28B TDD-LTE: B34/B38/B39/B40/B41
WWAN (Data Service)	GSM/GPRS/EDGE/UMTS/HSPA/HSPA+/WCDMA/TD-SCDMA/TDD-LTE/FDD-LTE
WLAN Function	Wi-Fi 802.11a/b/g/n/r/ac (2.4G + 5G dual-band Wi-Fi), support fast roaming
Bluetooth	Bluetooth 5.0, support BLE
GPS	GPS/AGPS/BDS/Galileo/GLONASS/QZSS

NFC (standard)

Working Frequency	13.56 MHz
Reading Distance	Within 40 mm
Communication Protocol	ISO14443A/14443B/15693

Development Support

Programming Language	Java
Development API	iScan API (Scanning Development Kits), Device API (Device Management/Configuration Development Kits), Android Standard Interface
Development Tool	Eclipse/Android Studio

Accessories

Standard Accessories	USB cable*1, back strap *1, power adapter*1, battery*1
Optional Accessories	Power adapter(fast charging), 2-in-1 charging cradle, 4-slot charging cradle, multifunctional 5-slot cradle, hand strap, fanny pack, protective case, protective film

Each product comes with a pack of practical and cost-effective accessories

USB Cable

Type-C to USB cable, 1m in length, support charging and data transmission



CHA-USBC-GNR

Back Strap

Mounted on the back of the device, design for stable gripping, protect device from sliding accidentally

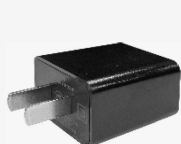


MNT-BS-T1 Pro

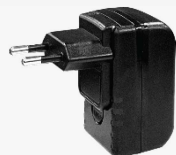
Power Adapter

Input voltage 100-240V, output 5V2A. Support plug types of China/Europe/UK/US/Australia, match with CHA-USBC-GNR

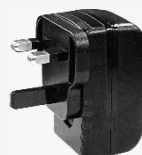
ps: select one of the available power adapters



CHA-PWAD-GNR-5V2A-CN



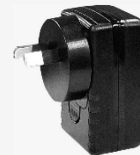
CHA-PWAD-GNR-5V2A-EU



CHA-PWAD-GNR-5V2A-UK



CHA-PWAD-GNR-5V2A-US



CHA-PWAD-GNR-5V2A-AU

Battery

5000mAh, detachable, equipped with one battery.

PS: additional battery units are available for purchase



CHA-BTRY-T1 Pro-5000MA

Improve management efficiency of devices and operational level of enterprises

Battery

5000mAh, detachable, equipped with one battery.
PS: additional battery units are available for purchase



CHA-BTRY-T1 Pro-5000MA

Multifunctional 5-slot cradle

support maximum connection for 5 units of 2-in-1 bottom chargers or 4-slot battery charging cradle, available power adapter types are: China/Europe/UK/US/Australia
PS: select one out of the available power adapters



CHA-MCRD5S-GNR

2-in-1 charging cradle

support maximum charging of 1 main units and 1 battery at the same time. Support connection to multifunctional 5-slot cradle. Available power adapter types: China/Europe/UK/US/Australia
ps: select one out of the available power adapters



CHA-BTC21-T1 Pro

4-slot battery charging cradle

support maximum charging of 4 main units at the same time. Support connection to multifunctional 5-slot cradle. Available power adapter types: China/Europe/UK/US/Australia
ps: select one out of the available power adapters



CHA-CRD4B-T1 Pro

Power adapter (fast charging)

Input voltage 100-240V, output 9V2A. Support plug types of China/Europe/UK/US/Australia, match with CHA-USBC-GNR
ps: select one out of the available power adapters



CHA-PWAD-GNR-9V2A-EU

T1 Pro Optional Accessories for Portability

Accessories Guide

Improve device portability and comfort for users. boost working efficiency

Fanny Pack

Used to carry main units and other accessories. Can be tied to the waist or used as a crossbody bag



MNT-FP-GNR

Hand Strap

Wear on your wrist to carry the device, avoid accidental drops, and assure the safety of equipment



MNT-HS-GNR

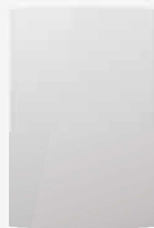
T1 Pro Optional Accessories for Protection

Accessories Guide

Lower risks of malfunction during usage, extend lifespan of devices

Protective Film

Protective film for touchscreen. It can protect the screen from cracking or being scratched in case there's an accidental drop or impact during usage



PRT-PTF-T1

Protective Case

Protective case for the main unit. It can prevent the malfunction of main unit in case there's any accidental drop or impact during usage



PRT-PTC-T1 Pro-RA



PRT-PTC-T1 Pro-TA